



PARTNERS FOR THE ARTS



President: Leilane G. Mehler
Vice President: Robert Misbin, MD
Secretary: F. Victoria Tresansky
Treasurer: Audrey Pendergast
Artistic Advisor: Elaine Walter, PhD
Membership: Cyd Everett

Summer 2013
Vol. I, No. I

NEWSLETTER

It has been a busy and successful four months!

The incredible encouragement of our partners—Baltimore Concert Opera, Lyric Opera Baltimore, Opera Delaware, Opera Lafayette, Virginia Opera, Washington Concert Opera, The National Philharmonic at Strathmore, the National Building Museum, and Addy Bassin's MacArthur Beverages —reinforces the idea that we are on the right road to fulfill our mission. Moreover, we have been very lucky! **PARTNERS** for the Arts started its year with the trust and support of many friends who believe in our mission.

Since its inception, **PARTNERS** has presented two very successful musicales, the first in March that launched the organization and the second in April at the residence of the Bulgarian Ambassador, which was so well received that the Ambassador invited us to perform at her residence again in September. Apart from introducing **PARTNERS** and its mission, these two events served as fund-raisers to begin collecting the money necessary to hold our first Vocal Awards Competition this fall.

In June, **PARTNERS'** members were invited at no cost to join with members of The Wagner Society of

Washington DC, represented by president emeritus Aurelius Fernandez, and of the Wagner Book Group, an offshoot of The Wagner Society, for a light-hearted look at the music and life of Richard Wagner, who celebrates his 200th birthday this year. Authentic and varied catered German food, wines, and beers were served. A good time was had by all, thanks to the generosity of our treasurer Audrey Pendergast.

We are happy to announce that all three prizes for **PARTNERS'** Vocal Awards Competition have been generously donated: the first prize will be *The Misbin Family Memorial Award*, the second prize *The Robin Phillips Award*, and the third prize *The Annie Totah Award*.

We are delighted to announce that the preliminary round of **PARTNERS'** Vocal Awards Competition will be held on Saturday, October 26, and the final round on Sunday, October 27. Both rounds will take place at The Lyceum in Alexandria. This competition will fulfill one of **PARTNERS'** main reasons for coming into being—to give emerging singers about to start their professional careers the opportunity

to earn valuable cash prizes and to be heard by those who make hiring decisions in opera companies.

The final round of the competition is open to the public without charge. Your presence is the best encouragement for our singers! Please join us on, Sunday, October 27, from 2:30 to 5 p.m.

We invite you to consider joining us in our endeavors to support the emerging talent in this field by becoming a member of **PARTNERS**, if you have not already done so—and to enjoy a thrilling time at our musicales hearing wonderfully gifted performers, our concerts, and master classes and lectures.

We also invite you to attend our Partners' productions. They have an exciting season ahead filled with drama, intrigue, passion, comedy, love, betrayal, forgiveness, and beautiful music all reserved for us. Please see the last page for details of their performances.

Operatically yours,

Leilane Grimaldi Mehler, President

Please visit our web site:
www.partners4thearts.org

Partners for the Arts encourage and promote the careers of emerging vocal artists not under professional management, interact with arts organizations and schools of music in mutually beneficial activities, and nurture audience development.

HIGHLIGHTS--MARCH MUSICALE

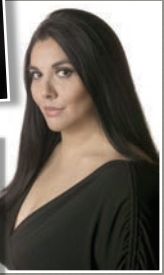


HIGHLIGHTS--APRIL MUSICALE



PARTNERS' Partners Events and Emerging Singers

MARCH MUSICALE



PARTNERS' first musicale received the support of two well-established singers, baritone Gustavo Ahualli and soprano Fabiana Bravo, and also featured future tenor star, Issachah Savage.

In January, mezzo-soprano **Leah Hawkins** received an Encouragement Award at the Mid-Atlantic Region Finals of the Metropolitan Opera National Council Auditions.

February saw us at **Opera Delaware's** Gala. The ballroom of the Dupont Hotel was filled. Lots of fun. In the same month, members of **PARTNERS** enjoyed **Peter Russell's** lecture series for **Washington Concert Opera**.

April was the time to go to **Washington Concert Opera**, to hear Donizetti's *Maria Stuarda*. Also in April, we went to a production of Mozart's *The Magic Flute*, performed by students at **George Mason University**. We also attended the Opera Workshop class of the Benjamin T. Rome School of Music at **The Catholic University of America**. It was great to hear the stars of tomorrow in both productions.

May started with **Opera Lafayette's** *Actéon*. It was followed by **Baltimore Concert Opera's** *Carmen*, **OperaDelaware's** *Lady Macbeth*, and **Lyric Opera Baltimore's** *Rigoletto*.

Also in May, mezzo-soprano **Leah Hawkins** graduated from Morgan State University with a degree in music and voice performance.

In June, **Issachah Savage** wowed the Kennedy Center's Millennium Stage audience with a program that included works by Beethoven, Quilter, and Wagner.

Below are Issachah and his family with John Edward Niles, director of The Wagner Society's Emerging Singers Program.



OPERADELAWARE'S GALA



WASHINGTON CONCERT OPERA
PETER RUSSELL



WASHINGTON CONCERT OPERA'S
MARIA STUARDA
CENTER: BARITONE
PATRICK CARFIZZI



OPERA WORKSHOP AT CUA



OPERA LAFAYETTE'S
ACTÉON



BALTIMORE CONCERT OPERA'S *CARMEN*
CENTER: SOPRANO
HEATHER JOHNSON
AND TENOR
BENJAMIN WARSCHAWSKI

APRIL MUSICALE



Renowned pianists Ralitz Patcheva, Ivo Kaltchev, accompanist Frank Conlon, and emerging singers soprano Yeji Yoon and mezzo-soprano Leah Hawkins made beautiful music for our members.

JUNE CELEBRATING WAGNER'S 200TH BIRTHDAY



President emeritus of The Wagner Society, Aurelius Fernandez, blows out the birthday candles.



Join the fun!

Come with us to these events presented by our Partners!

September 2013

- Sun. 22 **Washington Concert Opera** *I Masnadieri*
Thur. 26 **Baltimore Concert Opera** *L'Elisir d'Amore*
Fri. 27 **Partners'** Musicales
Sat. 28 **National Philharmonic** Beethoven's
Eternal Masterworks
Sun. 29 **National Philharmonic** Beethoven's
Eternal Masterworks
Sun. 29 **Baltimore Concert Opera** *L'Elisir d'Amore*

October

- Fri. 11 **Virginia Opera** *Falstaff*
Fri. 11 **OperaDelaware** *L'Elisir d'Amore*
Sun. 13 **Virginia Opera** *Falstaff*
Sun. 13 **OperaDelaware** *L'Elisir d'Amore*
Fri. 18 **Opera Lafayette** *Così Fan Tutte*
Sat. 19 **Opera Lafayette** *Così Fan Tutte*
Sat. 26 **National Philharmonic** *Zuill Bailey Cello*
Recital—Mostly Schumann
Sat. 26 **National Philharmonic** *Romantic*
Sentiments
Sat. 26 **Partners' Vocal Competition:** Preliminary
Round
Sun. 27 **Partners' Vocal Competition:** Final Round,
at the Lyceum* in Alexandria, VA. Open to the
public.
Sun. 27 **National Philharmonic** *Romantic Sentiments*

November

- Sun. 3 **Lyrical Opera Baltimore** *Tosca*
Thur. 7 **Partners'** Lecture on Verdi
Sat. 9 **National Philharmonic** *Lost Childhood—*
Concert Opera
Sun. 17 **Lyrical Opera Baltimore** *Dialogues of the*
Carmelites
Fri. 22 **Baltimore Concert Opera** *Norma*
Sat. 23 **National Philharmonic** *Verdi's Requiem*
Sun. 24 **Baltimore Concert Opera** *Norma*

December

- Fri. 6 **Virginia Opera** *The Magic Flute*
Sat. 7 **Partners'** Holiday Party
Sun. 8 **Virginia Opera** *The Magic Flute*

- Sat. 14 **National Philharmonic** *Handel's Messiah*
Sun. 15 **National Philharmonic** *Handel's Messiah*
Sun. 22 **National Philharmonic** *Washington Symphonic Brass*

January 2014**

- Fri. 17 **Opera Lafayette** *Les Femmes Vengées*

February

- TBA **Partners'** Lecture
Fri. 14 **Virginia Opera** *Ariadne auf Naxos*
Sun. 16 **Virginia Opera** *Ariadne auf Naxos*
Thur. 28 **Baltimore Concert Opera** *Les Pêcheurs de Perles*

March

- TBA **Partners'** Event
Sun. 2 **Baltimore Concert Opera** *Les Pêcheurs de Perles*
Fri. 7 **OperaDelaware** *Les Pêcheurs de Perles*
Sun. 9 **OperaDelaware** *Les Pêcheurs de Perles*
Sun. 9 **Washington Concert Opera** *Il Corsaro*
Fri. 28 **Bulgarian Music Society Partners'** Competition
Winners

April

- Fri. 11 **Virginia Opera** *Carmen*
Fri. 11 **Baltimore Concert Opera** *Il Trovatore*
Sun. 13 **Virginia Opera** *Carmen*
Sun. 13 **Baltimore Concert Opera** *Il Trovatore*
Wed. 30 **Opera Lafayette** *The Salon*

May

- TBA **Partners'** Concert 2013 Competition Finalists
Fri. 2 **Opera Delaware** *Il Trovatore*
Sun. 4 **Opera Delaware** *Il Trovatore*
Sun. 18 **Lyrical Opera Baltimore** *Nabucco*

*201 South Washington Street, Alexandria, VA 22314.

**For the National Philharmonic season in 2014, please visit
www.nationalphilharmonic.org

For more information on our Partners' events or **Partners'**
events, please visit our web site: www.partners4thearts.org
or e-mail: partners4thearts@aol.com



PATRICIA & ARTHUR MOELL PERFORMING ARTS CENTER AT THE LYRIC



Partners for the Arts, Inc.

6858 Grande Lane, Falls Church, VA 22043 - Tel: 703/241-5496 - Fax: 703/241-0584

E-mail: partners4thearts@aol.com - Web site: www.partners4thearts.org

Partners for the Arts, Inc. is a nonprofit organization qualified under Internal Revenue Code Section 501(c)(3).

Contributions to **Partners** for the Arts, Inc. are tax-deductible to the extent allowed by law.